

MRI MARS (metal artifact reduction sequence) of Total Hip Replacement

Revised: 6/2021

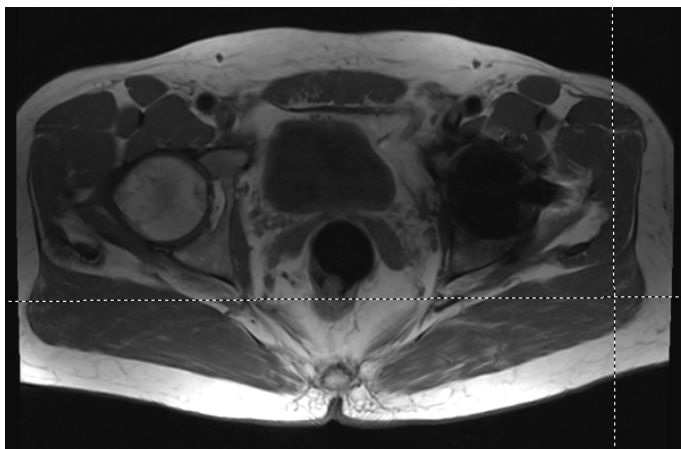
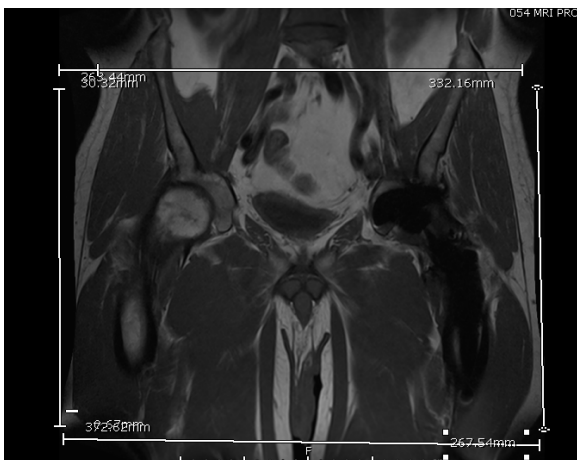
CPT Code: 73721

Indications: Total hip replacement complications

Contrast: No

Preferred Scanner: ESPREE 1.5T with MARS sequences

Plane	Sequence	Slice (mm)	Gap (mm)	FAT SAT	FOV (mm)	Scan Range	Notes
Coronal	T1	5mm	0	N	350-400	Distal SI joint thru lesser trochanter. A-P to include entire prosthesis and muscle.	*One coronal sequence needs to include entire prosthesis
Coronal	T2 STIR	5mm	0	N	350-400	Distal SI joint thru lesser trochanter. A-P to include entire prosthesis and muscle.	*If fluid collection seen near hip joint, include all of it in imaging
Axial	T1	6mm	0	N	350-400	Distal SI joint thru lesser trochanter. A-P to include entire prosthesis and muscle.	
Axial	T2	6mm	0	N	350-400	Distal SI joint thru lesser trochanter. A-P to include entire prosthesis and muscle.	
Coronal	T2	6mm	0	N	350-400	Distal SI joint thru lesser trochanter. A-P to include entire prosthesis and muscle.	



MRI MARS (metal artifact reduction sequence) of Total Hip Replacement