

## MRI Foot With/Without Contrast Guideline (Forefoot or Midfoot)

Revised: 3/2021

CPT Code: 73720

Indications: Infection, Abscess, Mass, Open Wound, Osteomyelitis

Contrast: Yes

**INPATIENT EXAMS: UTILIZE LARGER FOV TO IMAGE ENTIRE FOOT**

Preferred Scanner-Any scanner with dedicated foot coil

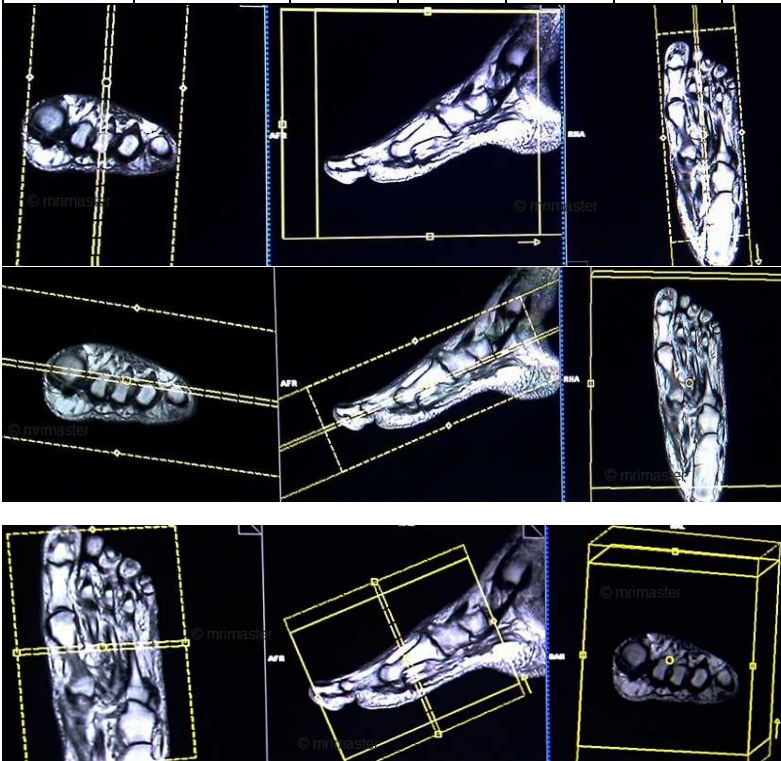
Plane	Sequence	Slice (mm)	Gap (mm)	FAT SAT	FOV (mm)	Scan Range	Notes
Coronal	T1	3mm	.3mm	NO	140	Using SAG scout, position block perpendicular to the metatarsals. Using AX scout, angle block perpendicular to metatarsals.	
Coronal	STIR	3mm	.3mm	NO	140	Using SAG scout, position block perpendicular to the metatarsals. Using AX scout, angle block perpendicular to metatarsals.	
Sagittal	T1	3mm	.3mm	NO	140	Using AX scout, position block parallel to metatarsals. Using AX scout, position perpendicular to the line across metatarsals.	
Sagittal	T2	3mm	.3mm	YES	140	Using AX scout, position block parallel to metatarsals. Using AX scout, position perpendicular to the line across metatarsals.	FAT SAT (if fat sat fails replace with STIR)
Axial	T1	3mm	.3mm	NO	130	Using SAG scout, position block parallel to the metatarsals. Using COR scout, position block across the line of the metatarsals	
Axial	STIR	3mm	.3mm	NO	130	Using SAG scout, position block parallel to the metatarsals. Using COR scout, position block across the line of the metatarsals	
*SEE NOTES*	T1	3mm	.3mm	YES	130/ 140	See plane above as applies to mass	Pre contrast FS plane should be determined at TOS. Pick plane that best demonstrates mass. Pre Contrast and post contrast sequence in same plane

## MRI Foot With/Without Contrast Guideline (Forefoot or Midfoot)

							<b>must match EXACTLY (same TR/TE/NEX/FA etc)</b>
--	--	--	--	--	--	--	---

### CONTRAST

Plane	Sequence	Slice (mm)	Gap (mm)	FAT SAT	FOV (mm)	Scan Range	Notes
Coronal	T1	3mm	.3mm	YES	140	Using SAG scout, position block perpendicular to the metatarsals. Using AX scout, angle block perpendicular to metatarsals.	FAT SAT
Sagittal	T1	3mm	.3mm	YES	140	Using AX scout, position block parallel to metatarsals. Using AX scout, position perpendicular to the line across metatarsals.	FAT SAT
Axial	T1	3mm	.3mm	YES	130	Using SAG scout, position block parallel to the metatarsals. Using COR scout, position block across the line of the metatarsals	FAT SAT





## MRI Foot With/Without Contrast Guideline (Forefoot or Midfoot)